

## DIE-CAST METAL KNUCKLE COUPLERS

Die-cast metal knuckle couplers are standard on each passenger car. Our engineering department has developed the most unique coupler system in model railroading in which the coupler arm is spring loaded to "cushion" the starting/stopping of the train and provide smoother operation through the curves. This unique feature does not require conversion to any other coupling system.

## SERVICING

This product is built with pride by USA Trains and is covered by a limited warranty. (See limited warranty terms). Please follow these instructions carefully before returning:

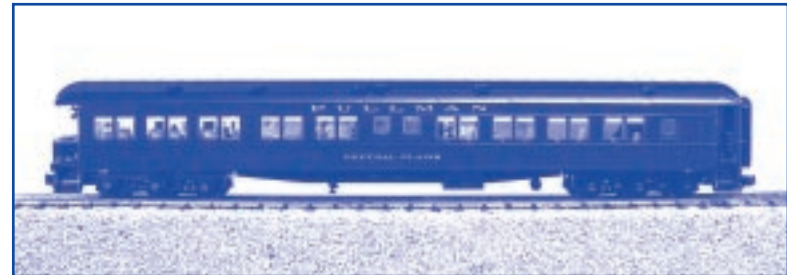
1. Return passenger car in its original blue/red box with the proper foam inserts and then pack the original box in a proper shipping carton so it is well protected in shipment. The package must be fully insured and prepaid. USA Trains is not responsible for damage or loss during shipment.
2. Include a note explaining the problem and servicing you need performed. Be sure to include your name, street address, (NO P.O. BOXES PLEASE) City, State, Country (if outside U.S.A) and zip code along with a daytime phone number including area code. If the service is not covered by warranty, a reasonable service fee will be charged. For any passenger car to be returned outside the continental U.S.A., please include \$50.00 U.S. currency to cover return postage. Any passenger car returned to customers in the continental U.S.A. will be pre-paid by USA Trains.
3. Ship your item to:  
USA TRAINS  
662 CROSS STREET  
MALDEN, MA. 02148

## LIMITED ONE YEAR WARRANTY

This USA Trains passenger car is warranted for one year from the date of purchase against defects in material or workmanship. We will repair or replace (at our option) the defective part without charge for parts or labor within one year of the original date of purchase provided the warranty registration card has been received by USA Trains and purchased from an authorized USA Trains Dealer. This warranty does not cover items that have been abused or damaged by careless handling or improper operation such as a train derailment, modification or repair by non-factory technicians. Parts that "wear out" due to excessive use are also not covered under warranty. USA Trains reserves the right to determine "excessive use". Transportation costs incurred by the customer are not covered under this warranty.



## HEAVYWEIGHT PASSENGER CAR INSTRUCTIONS



USA TRAINS  
662 CROSS STREET  
MALDEN, MA 02148  
USA  
[www.usatrains.com](http://www.usatrains.com)



Dear Customer,

Congratulations on your purchase of this highlydetailed, high quality G scale heavyweight passenger car. You now have one of the most detailed models of a passenger car ever made. USA Trains is committed to producing the most highly detailed and authentic railroad equipment for G scale modelers.

We thank you for your continued support and hope you enjoy our products.

Happy Railroading  
USA TRAINS

## FEATURES

- 1:29 Scale heavy gauge ABS construction
- Interior soft glow flicker free LED lighting that slowly dims out after the train stops
- Full interiors with period correct painted figures
- Authentic roof ventilators
- Full underframe with separately applied detail parts
- Sprung die-cast metal trucks with blackened metal wheels
- Opening Vestibule, Baggage, and Dining car doors
- Lift up drop plate with metal grab rail in "up" position
- Separately applied metal grab irons, coupler lift bar, and ABS air hoses
- Rubber diaphragms with metal gates
- Die-cast cushioned coupler that extends in curves
- Observation car features lighted drumhead & marker lights, metal platform railings, and diamond plate platform
- Minimum 8' diameter

## LIGHTING

Each passenger car is equipped with a switch to control the lights. On the bottom of the car, there is a slide switch for ON/OFF lights. The observation is equipped with a three position switch which also controls the rear lights.

All cars except  
observation

<b>ALL LIGHTS ON</b>	<b>ALL LIGHTS OFF</b>
------------------------------	-------------------------------

Observation car  
only

<b>ALL LIGHTS ON</b>	<b>ALL LIGHTS OFF</b>	<b>ONLY REAR LIGHTS ON</b>
------------------------------	-------------------------------	------------------------------------

The lighting system has soft glow flicker free LED lighting that slowly dims out after the train stops.

## INTERIOR FEATURES

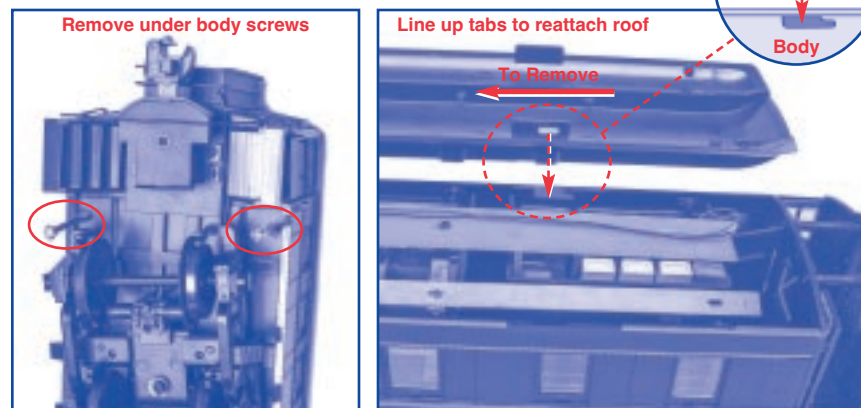
Each passenger car is equipped with prototypical interiors complete with separately detailed components and hand painted figures. Additional figures can be added by removing the roof. To remove roof, remove four screws located under body at four corners. The observation car has three screws - one at center of observation end. After removing the screws, remove roof by sliding roof to one end and lift up. Install in reverse order.

Additional figure sets are available from your dealer.

R320 1920's Seated Figure Set #1

R321 1920's Seated Figure Set #2

(Each set contains seven assorted figures)



## VESTIBULE OPENING DOOR & FLOOR TRAP OPERATION

For those models that feature a vestibule end, USA Trains has added a working floor trap which shows that USA Trains is committed to providing its customers the most realistic detailed product available. To operate this feature, push the vestibule door inward which allows the floor trap to raise upward. The metal grab rail on the bottom of the floor trap is now available for passengers entering / exiting the car.

